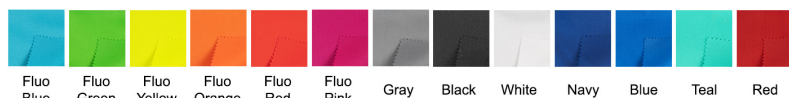
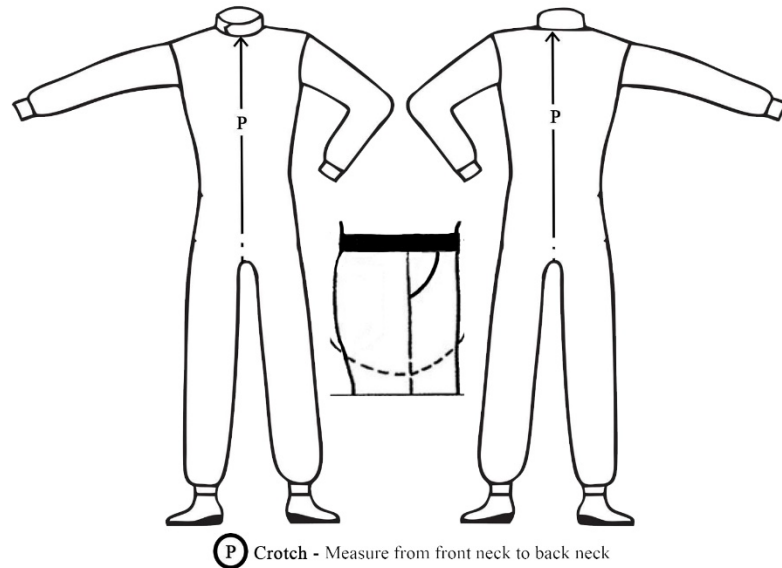
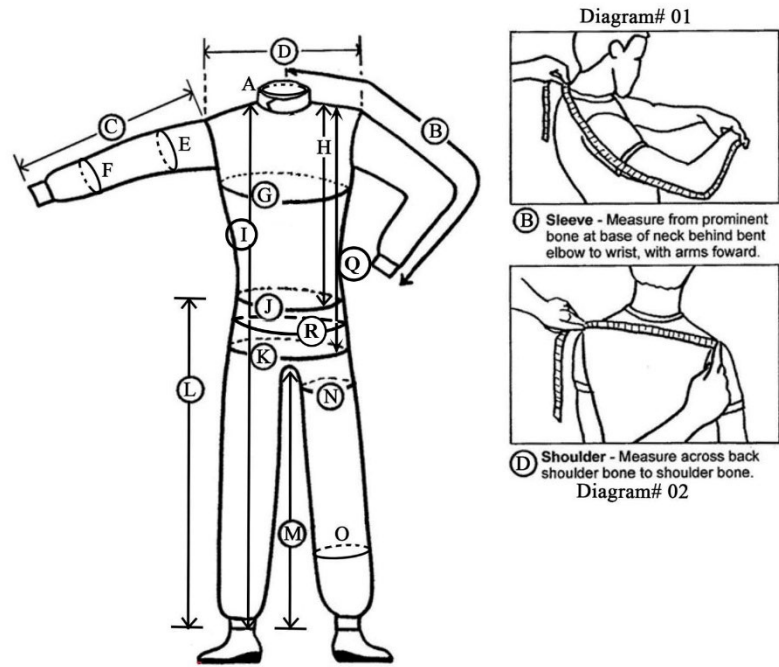


Name		Order #
Email		
Phone		
Purchase Date		
Shipping Address		

SFI Rating	3.2A/5	or	3.4/5
Jacket/Pant Measurements (in inches)			
A. Neck CIR	Arm Restraint	Yes	No
B. Sleeves	Jacket/Pant Colors Black, Gray, White, Fluo Blue, Fluo Pink, Fluo Green, Fluo Yellow, Fluo Orange, Fluo Red, Blue, Red, Teal		
C. Sleeves Straight Arm			
D. Shoulder Width	Collar		
E. Bicep CIR	Arms (Outside)		
F. Forearm CIR	Arms (Inside)		
G. Chest	Shoulder (Top)		
H. Pos. of Belt	Shoulder (Lining)		
I. Body Length	Belt		
J. Waist CIR	Body		
K. Hip CIR	Side Panels		
L. Outside Leg	Side Panel Acc		
M. Inside Leg	Stretch (blk or gry)		
N. Thigh CIR	Graphics:		
O. Calf CIR	Style:	Emb	Sil Heat
P. Crotch	Chest:		
Q. Jacket Length	Belt:		
R. Real Waist (Belt Line) CIR	Arms:		
T-Shirt Size:	Legs:		
Weight (lbs):	Back:		
Height (in):	Notes:		



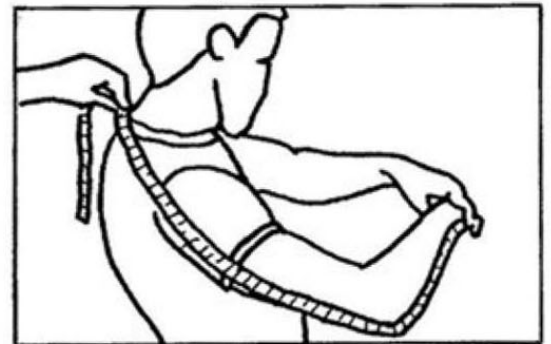
Build Your Custom ZR-40 or ZR-60 Jacket & Pants

JACKET/PANT MEASUREMENTS

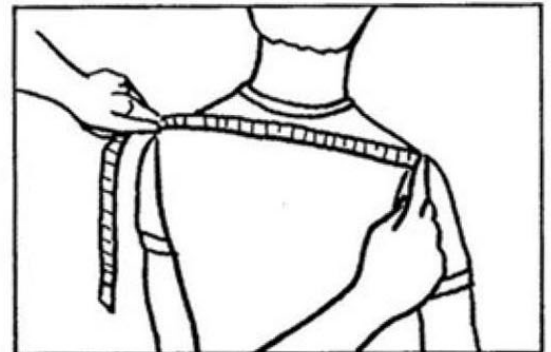
Your care in reading these instructions carefully will ultimately determine the fit of your suit.

- Please take all the measurements requested on this form carefully and precisely.
- Ensure to take the measurement in Inches.
- Stand erect, ask someone to help measure you with a fabric measuring tape.
- The measurements should be taken wearing standard fitting clothing.
- Do not allow for any tolerances and ensure pockets are empty with shirt tucked in. Make sure the belt of your pants is sitting where you want your belt on the suit to go.

Diagram# 01

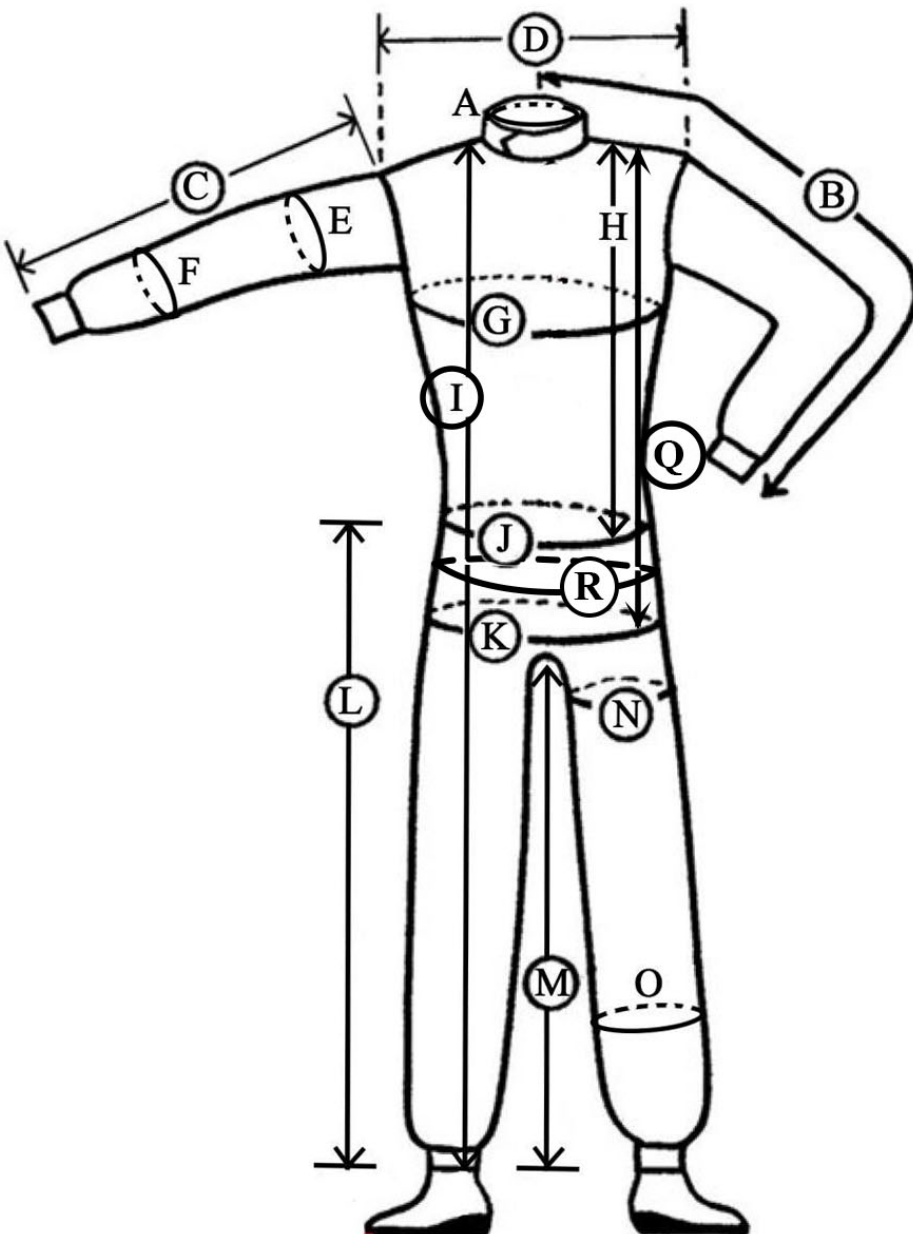


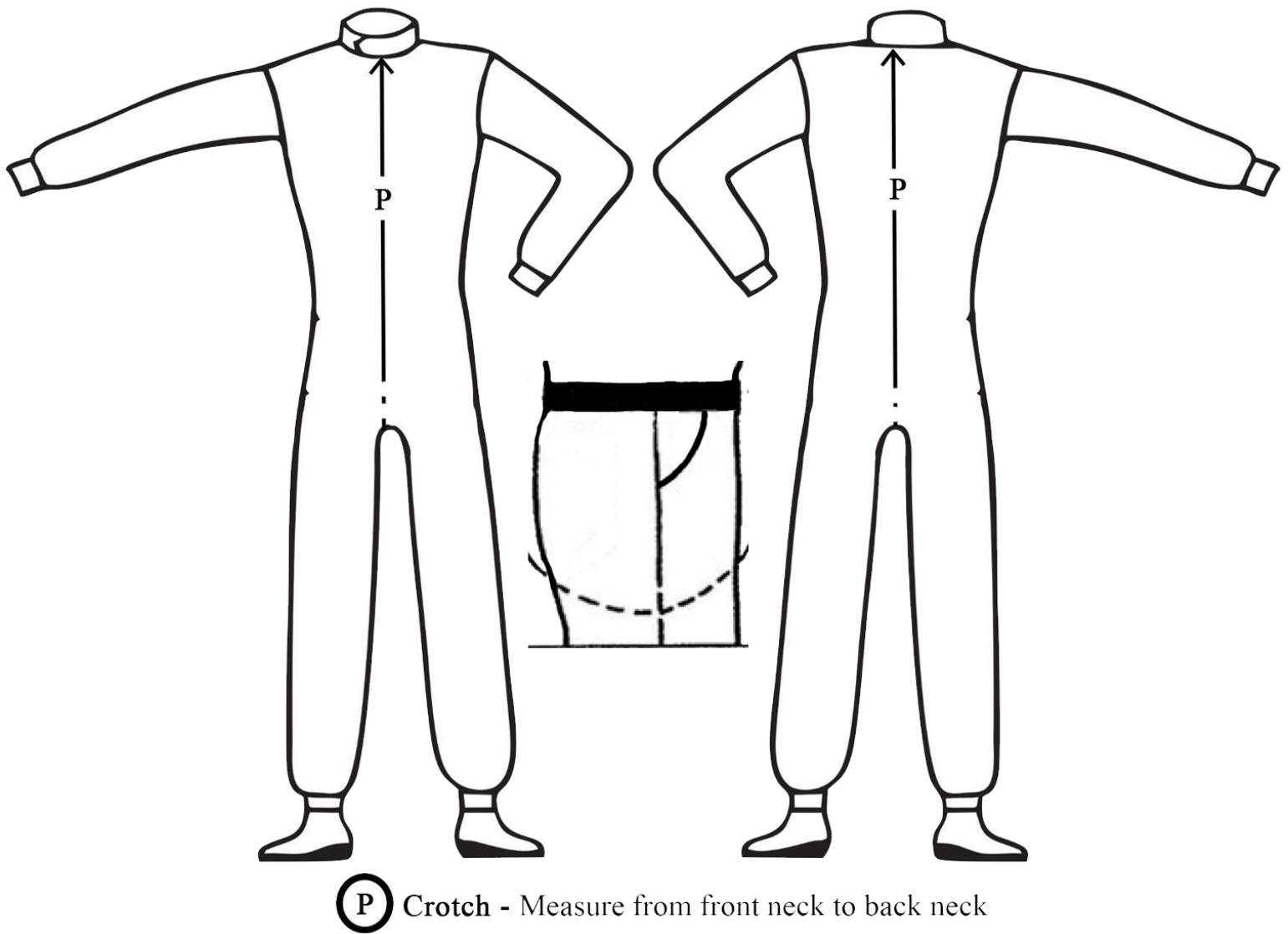
(B) Sleeve - Measure from prominent bone at base of neck behind bent elbow to wrist, with arms forward.



(D) Shoulder - Measure across back shoulder bone to shoulder bone.

Diagram# 02





Measurements:

- A. **Neck Circumference:** Measure around base of neck. _____
- B. **Sleeves:** Measure from center back (just below neck), along shoulder and arm (with elbow bent) to wrist bone. (See Diagram# 01) _____
- C. **Sleeves Straight Arm:** Measure shoulder tip to wrist bone. _____
- D. **Shoulder Width:** This measurement is the width across shoulders, shoulder tip to shoulder tip. (Not shirt seam). (See Diagram# 02) _____
- E. **Bicep circumference:** Measure at the largest point around bicep, with muscle taut. _____
- F. **Forearm circumference:** Measure at largest point around forearm, with muscle taut. _____
- G. **Chest:** Measure directly under arms, with arms down, around largest part of chest or breasts. _____
- H. **Position of belt:** Measuring from top center of the shoulder to belt line. _____
- I. **Body length:** Measuring from center of the shoulder to ankle bone. _____
- J. **Waist Circumference:** Measure around waist (above belt line and around the largest part of your stomach). _____
- K. **Hip Circumference:** Measure around widest part of hips/buttocks. Ensure pockets are empty. _____
- L. **Outside Leg:** Measure from your belt line to your ankle bone, along outside of leg _____
- M. **Inside leg:** Measure from crotch to ankle bone. Ensure pants are pulled up like where your underwear would sit on you. (not like jeans hanging down to knees) _____
- N. **Thigh Circumference:** Measure around widest part of thigh (4 Inches down from the crotch) _____
- O. **Calf circumference:** Measure around the widest part of the calf. _____
- P. **Crotch:** Measure from front neck, down chest, through legs, and up back to the base of neck. _____
- Q. **Jacket Length:** Measure from center of shoulder to desired length of jacket _____
- R. **Real Waist (Belt Line) Circumference:** Measure around waist at normal belt line _____

Note: Position of Belt (H) and Outside Leg (L) should add up to match Body Length (I).